

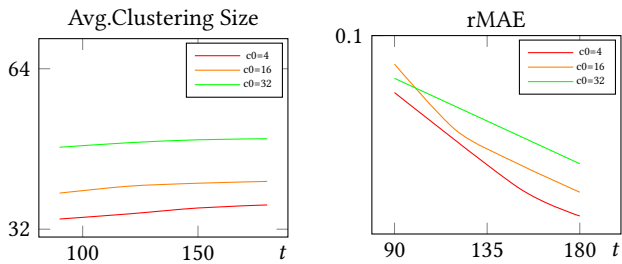
# Learning to Cluster for Rendering with Many Lights Supplemental Document

YU-CHEN WANG, National Taiwan University, Taiwan

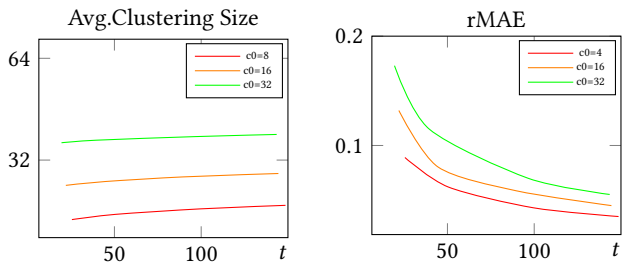
YU-TING WU, National Taiwan University, Taiwan

TZU-MAO LI, MIT CSAIL & University of California San Diego, United States

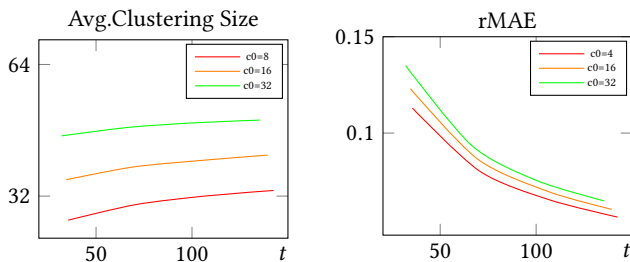
YUNG-YU CHUANG, National Taiwan University, Taiwan



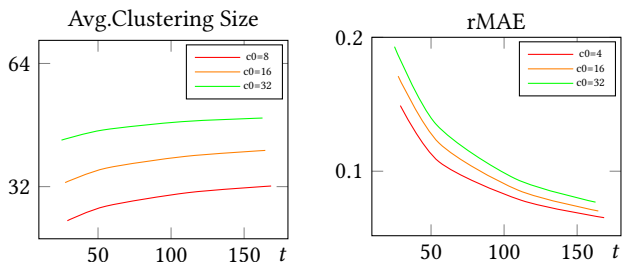
(a) BATHROOM



(b) BEDROOM



(c) CLASSROOM



(d) KITCHEN

Fig. 1. We compare the evolution of average clustering size and relative mean absolute error (rMAE) for our method with different initial cut sizes using (a) the BATHROOM scene, (b) the BEDROOM scene, (c) the CLASSROOM scene, and (d) the KITCHEN scene. In the experiment, we constrain the maximum cut size to be 64. With a smaller initial cut size, our method achieves a lower error while avoiding unnecessary clustering.

## ACM Reference Format:

Yu-Chen Wang, Yu-Ting Wu, Tzu-Mao Li, and Yung-Yu Chuang. 2021. Learning to Cluster for Rendering with Many Lights Supplemental Document. *ACM Trans. Graph.* 40, 6, Article 277 (December 2021), 2 pages. <https://doi.org/10.1145/3478513.3480561>

Authors' addresses: Yu-Chen Wang, National Taiwan University, No. 1, Section 4, Roosevelt Rd, Taipei, 10617, Taiwan, [yucwang@cmlab.csie.ntu.edu.tw](mailto:yucwang@cmlab.csie.ntu.edu.tw); Yu-Ting Wu, National Taiwan University, No. 1, Section 4, Roosevelt Rd, Taipei, 10617, Taiwan, [kevinsosner@cmlab.csie.ntu.edu.tw](mailto:kevinsosner@cmlab.csie.ntu.edu.tw); Tzu-Mao Li, MIT CSAIL & University of California San Diego, United States, [tzli@ucsd.edu](mailto:tzli@ucsd.edu); Yung-Yu Chuang, National Taiwan University, No. 1, Section 4, Roosevelt Rd, Taipei, 10617, Taiwan, [cyy@csie.ntu.edu.tw](mailto:cyy@csie.ntu.edu.tw).

Permission to make digital or hard copies of part or all of this work for personal or classroom use is granted without fee provided that copies are not made or distributed for profit or commercial advantage and that copies bear this notice and the full citation on the first page. Copyrights for third-party components of this work must be honored. For all other uses, contact the owner/author(s).

© 2021 Copyright held by the owner/author(s).

0730-0301/2021/12-ART277

<https://doi.org/10.1145/3478513.3480561>

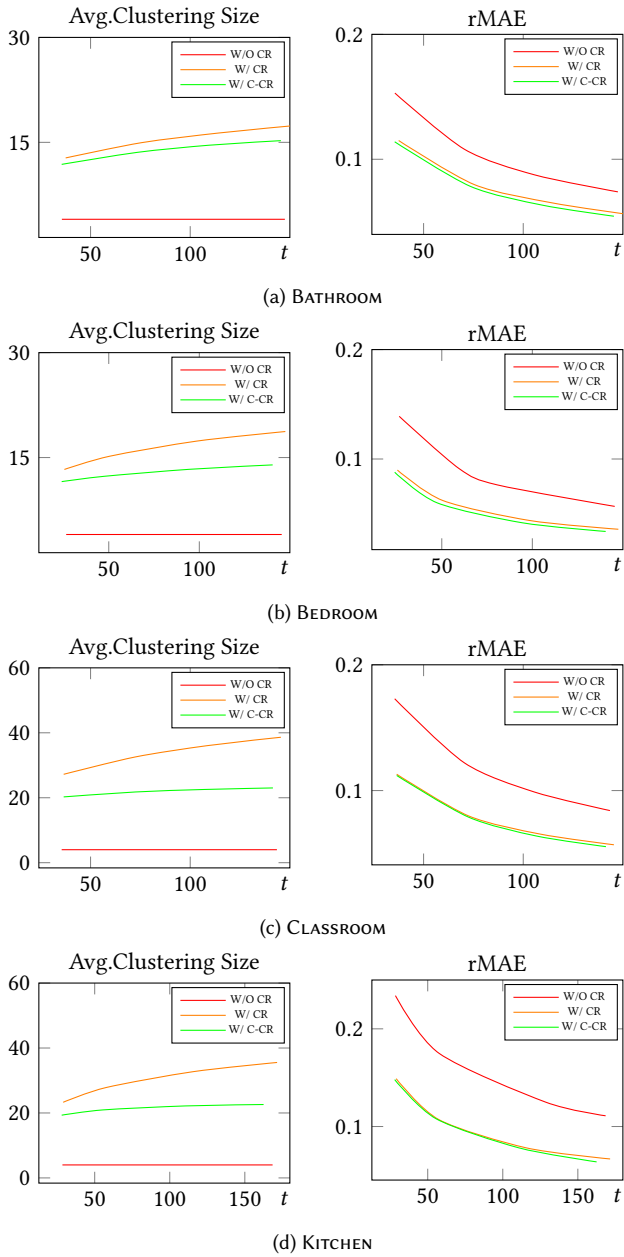


Fig. 2. We compare the evolution of average clustering size and relative mean absolute error (rMAE) for our method without cluster refinement (W/O CR), with cluster refinement (W/ CR), and with the constrained cluster refinement (W/ C-CR), where we stop splitting when there is no refinement for a while or when we reach a maximum cut size. We compare them using (a) the BATHROOM scene, (b) the BEDROOM scene, (c) the CLASSROOM scene, and (d) the KITCHEN scene. We start from a light clustering with  $|C_0| = 4$ . We set the maximum cut size as 32 and  $\Gamma = 128$ . The cluster refinement indeed leads to lower error, while the constraints avoid unnecessary clustering and also deliver slightly lower error.